

Clark's BumPad

Pattern is for a 17 lbs dachshund with 14" low-rise waist, 3" inside thigh to thigh.

Time

Approx 1.5 hours from cutting to finished project (does not include time to adjust pattern)

Supplies

- 1/2 yard of soft, synthetic fabric that will take the wear & tear of scooting and be as friction free as possible. Suggested: medium weight rip stop nylon, flag cloth
- 2 pieces of 8" x 8" lofty synthetic fleece to use as a cushion.
- Thread, baby diaper safety pin

With this BumPad on one can express for urine or poop without removing the garment.

Make your dog's paper pattern

Because this is a wrap garment, it has a good amount of flexibility in fit. Draw a one inch grid on your newspaper/tissue paper to ensure correct measurement

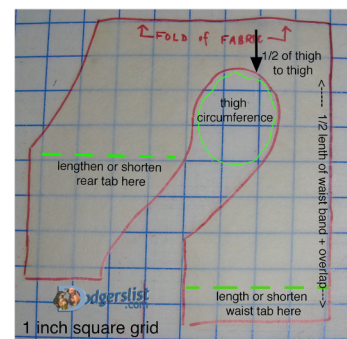
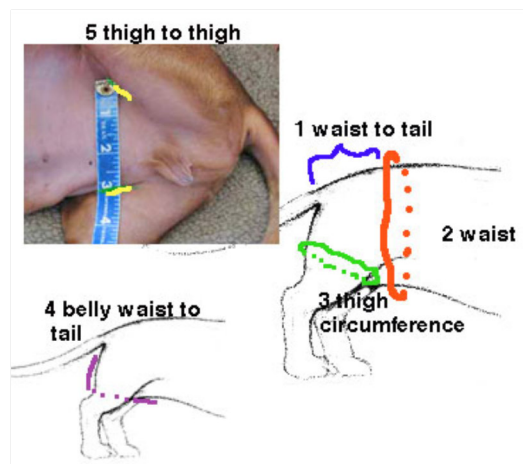
Get 5 measurements for your dog

1. back waist to tail. **Clark is 4"**
2. waist **Clark is 14"**
3. thigh circumference. **Clark is 8"**
4. belly waist to tail. **Clark is 6"**
5. thigh to thigh. **Clark is 3"**

Adjust pattern to your dog

[Click to Print out the pattern](#) as a guide in drawing the lines for your dog's pattern on newspaper, tissue paper, etc.

- **Use inside thigh measurement #5** Adjust pattern by moving the "place on fold" line 1/8" to 1/4" more or less on the fold of the fabric. For example: off setting downwards from the fold line 1/8" actually yields 1/4" increase in thigh measurement. Off setting upwards 1/8" from the fold line subtracts from the thigh measurement 1/16"



- **Use waist measurement #2** Extend or take in waist as needed according to your dog's waist measurement #2 + add 2 inches for overlapping tabs. Clark's waistband is 14" + 2" = 16" band.

- **Belly to waist #4** and **waist to tail #1** measurements Extend or take in rear tabs as needed according to your dog's belly-tail and waist to tail measurement. There is no extra overlap adjustment needed for the rear tabs.

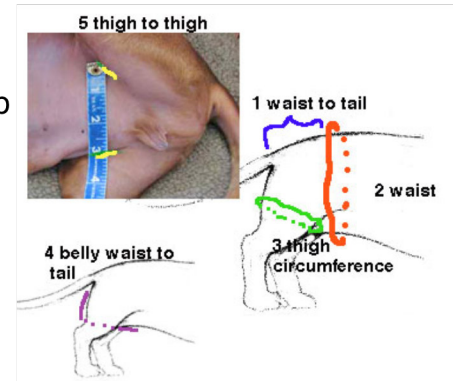
- **Redraw your pattern** to include all your adjustments on newspaper, tissue paper, etc.

- **Use your adjusted pattern to cut** a sample out of cheap fabric.

Cut one piece from scrap fabric for a test fit.

Further adjust the rear and waist tabs for length if needed.

Test fit on dog.



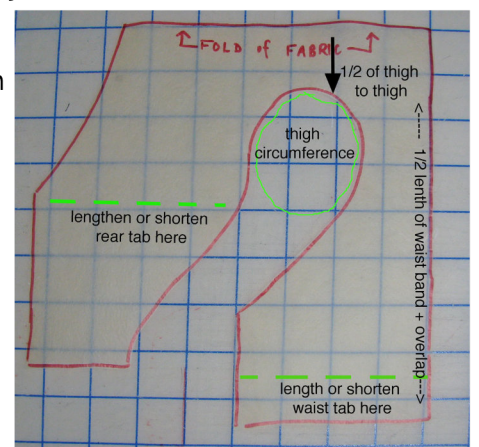
- **Use #3 thigh circumference** to trim with your scissors a tiny bit to enlarge if test leg hole is too tight on your dog.

NOTE: This is a low-rise waist pattern. The waist band will sit just in front of the thighs, not at the belly button.

1. Cut one more test fit out of cheap fabric to see if any further tweaking of adjustments are necessary.
2. Trace the fabric pattern on to paper (newspaper, tissue paper, etc.) Write on the paper pattern any reminders, etc.

Cutting the good fabric

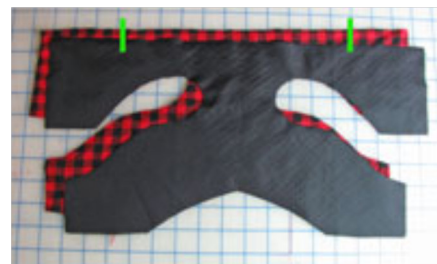
1. Place your adjusted pattern on fold of fabric and cut the first piece of garment fabric.
2. Move pattern to cut 2nd fabric piece of garment fabric. Also on the fold of the fabric



Setting up for sewing.

The photo shows two different fabrics for clarity of instruction.

1. Set sewing machine stitch length to: 2.5 to 3.0.
2. Stack and line up the two cut fabric pieces— right sides (RS) together.
3. Closely look at the checked red checked fabric. Note how to start and end your stitching. This little trick will help to easily turn under the waist opening in future step.
4. Sew using a 1/4 in seam allowance around the outer edge except between the two green bars. This opening is where you will turn the project right side out in the step #5.
5. Pull all the tabs thru the opening. Press all around to flatten seams
6. Fold under raw openings at the waist.
7. Pin the opening closed. Press again.
8. Edge stitch 1/8" in from edge around the entire project including where the waist has been pinned closed.



Adding the fleece cushion

1. Stack the two fleece pieces one on top of another wrong side down.
2. Place the inside of the garment face down on top of the fleece. The side you want your dog to scoot on will be face up.
3. Now you will be stitching on the outside of the garment to secure the fleece (see white dotted line)
4. Trim within 1/8" to 1/4" away from the garment. Fleece does not ravel and a little bit of extra fleece at the edge will be decorative.



The BumPad is complete!

- Baby diaper safety pin to close.
- Lay two fingers on spine to provide the right amount of snugness around the waist.
- Overlap all four garment tabs across your fingers.
- Guide the safety pin between your two fingers as the safety pin goes through the four tabs, better to stick yourself than the dog.

View how the bumPad stays on with all kinds of active movement, backing up, turning, over rugs and on smooth floors: https://youtu.be/J-f_w3Bx9xk

