

IVDD

what is a herniation like?



In IVDD Primer - Introduction we learned what IVDD is and which dogs are most likely to have it.

If an intervertebral disc **herniates**, inflamed tissue **pushes** on the spinal cord, the brain's link to the body.



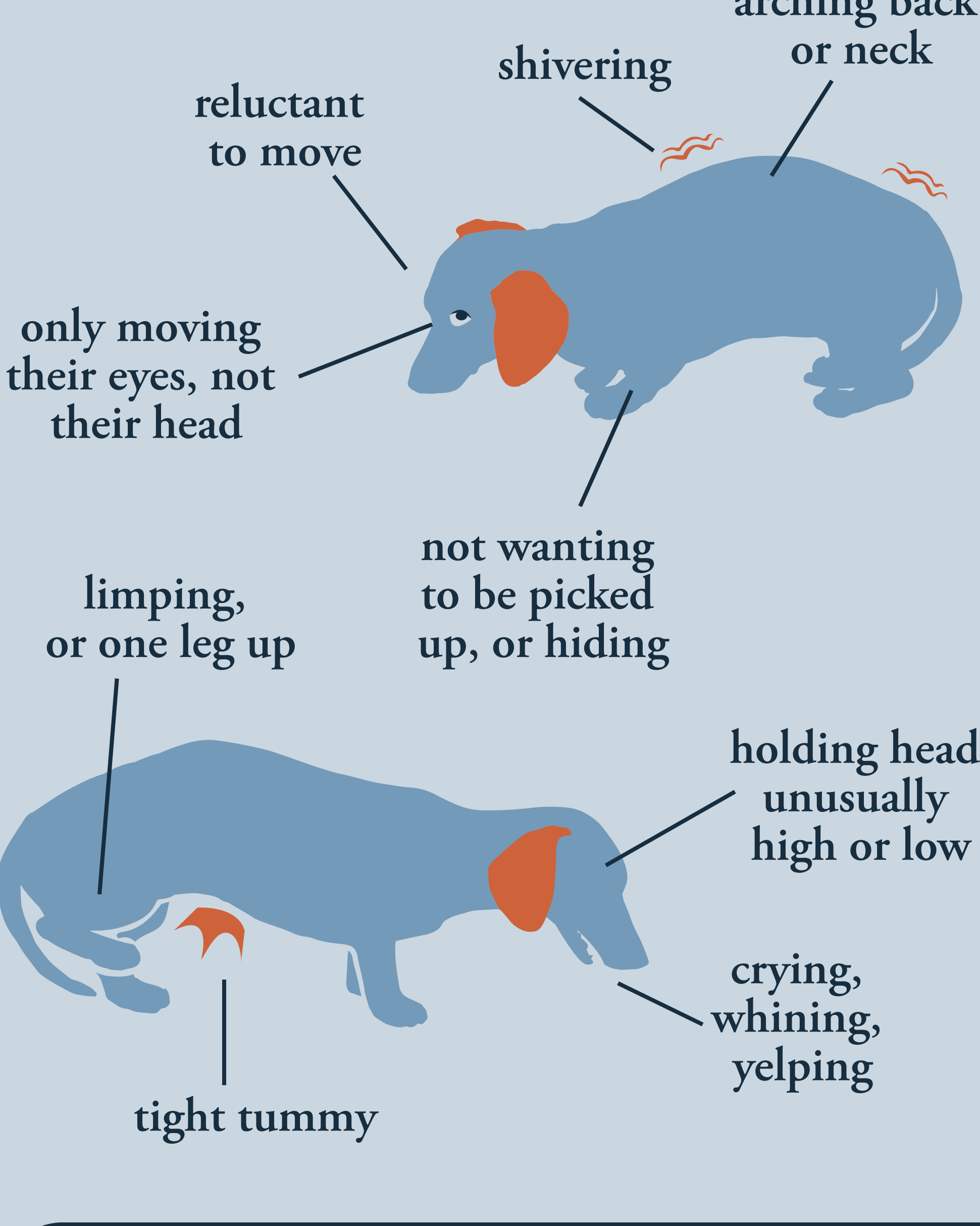
The pressure **must be relieved** to reduce the chance of permanent damage.

Fast action is needed.

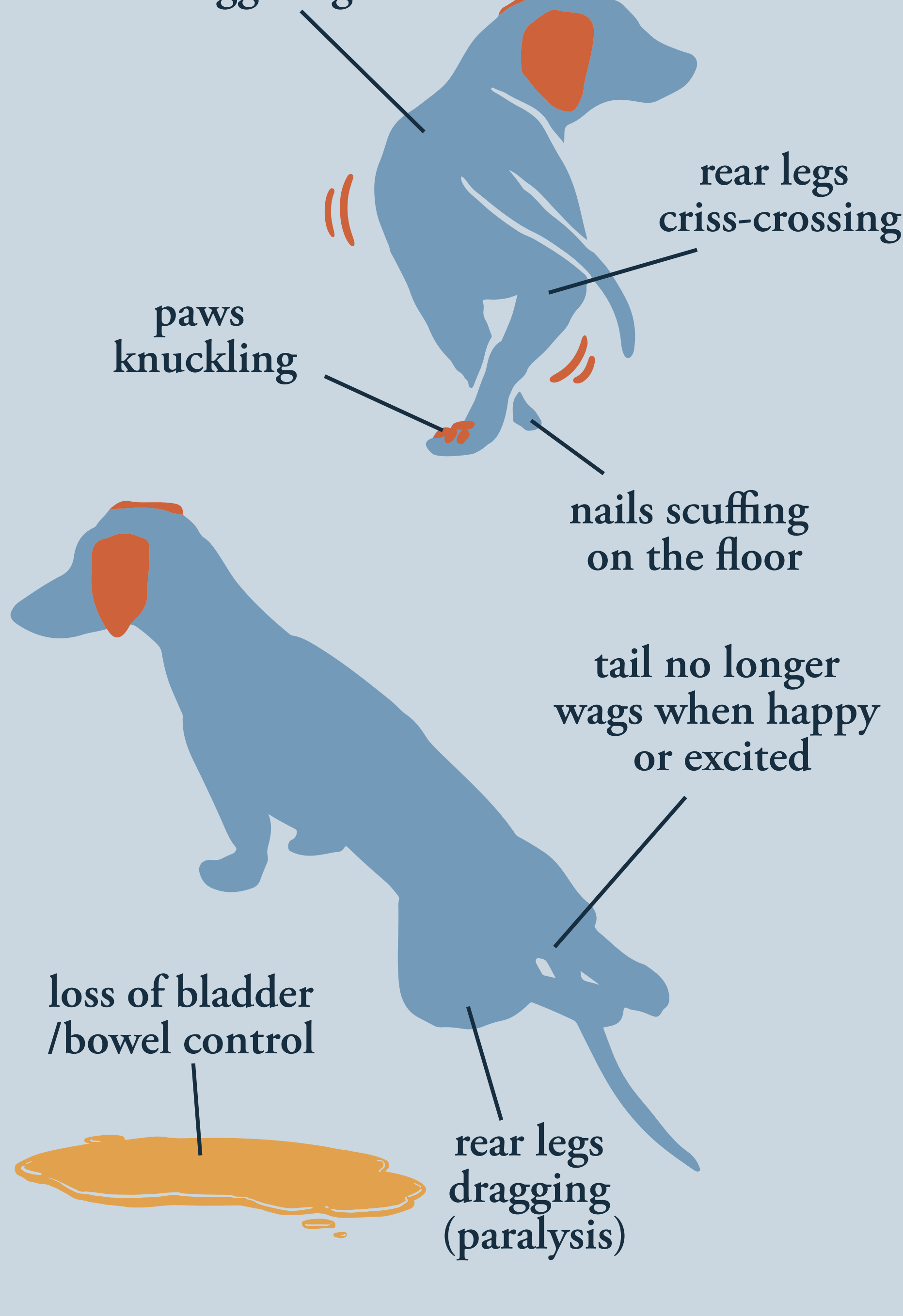
WHAT TO LOOK FOR IN YOUR DOG

These symptoms may occur right after a big jump or fall, or they may appear for no obvious reason.

pain



reduced neurological function

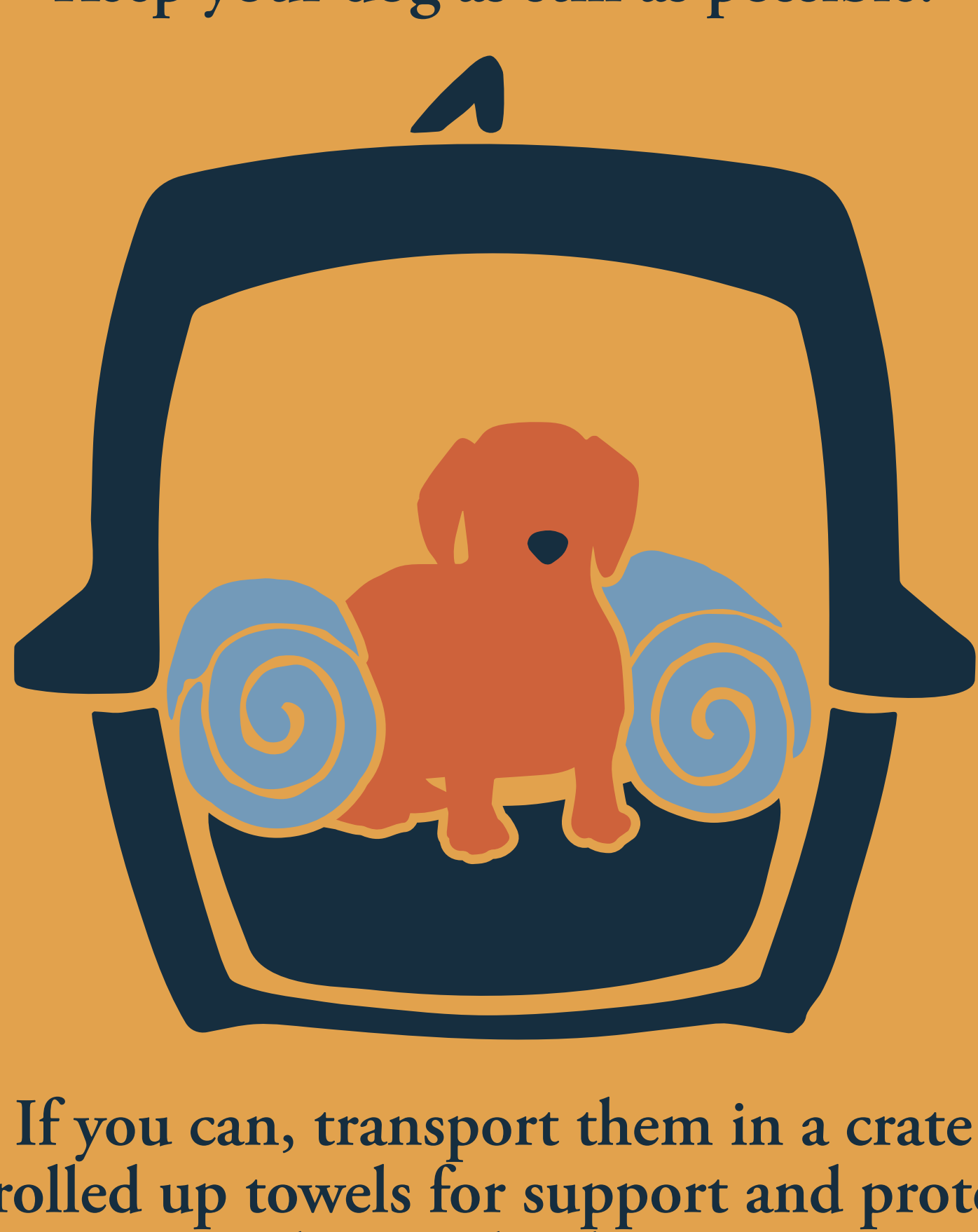


If you suspect a disc herniation seek veterinary help as soon as possible!



The sooner you act, the better the chance to recover from nerve damage.

Keep your dog as still as possible.



If you can, transport them in a crate with rolled up towels for support and protection during the drive.

Only a vet can...

- + properly diagnose IVDD
- + eliminate other conditions that share the same symptoms
- + prescribe medications appropriate for your dog's other health conditions

A neuro or ortho specialist is an asset, but many dog owners have equal success with their regular vet when armed with their **own IVDD knowledge.**



And remember: **many dogs walk again!**

Even those who don't fully recover can continue to lead a happy, healthy life.

what will happen at the vet? should I choose surgery or conservative?

continued in "IVDD Primer - Treatment"